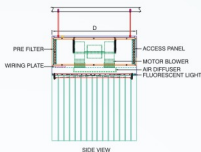
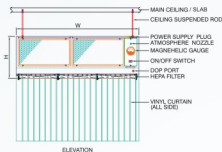


## LAMINAR AIR FLOW UNIT (CEILING SUSPENDED)



### EXTERNAL DIMENSIONS

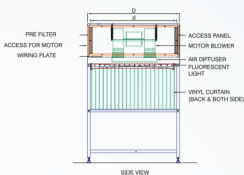
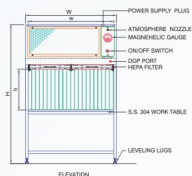
HEPA FILTER SIZE	W	D	H
3' X 2'	995	735	665
4' X 2'	1325	735	665
4' X 4'	1325	1345	665
6' X 4'	1950	1345	665

Sr. No.	Item	Description
1)	<b>MOC</b>	SS 304 / SS 316 / Customised
2)	<b>HEART OF SYSTEM COMPRISES OF</b>	
2.1		Imported Minipleat HEPA Filter with hot melt technology, which conforms to EU-13 / EU-14 Grade
2.2		Fabtech make Fresh Air prefilter which conforms to EU 6 Grade, with efficiency of 95% down to 5µ.
2.3		Motor Blower provided are statically and dynamically balanced, Sufficient capacity and static pressure is maintained to take care of airflow requirement for entire life to HEPA.
2.4		Dwyer Make Magnehelic Differential Pressure Gauge across Supply HEPA Filter
2.5		Fluorescent Light ( 250 Lux)
2.6		ON/OFF Switches for motor & Lights.
2.7		DDP Test port at upstream of HEPA filter
3)	<b>PERFORMANCE</b>	
3.1	Air cleanliness	ISO Class 5 (ISO 14644-1:1999 (E))
3.2	Air Velocities	0.45 ± 0.05 mps
3.3	Air Flow	Vertical
3.4	Noise Level	Less than 67 dB on Scale 'A' when Ambient is not greater then 55dB on Scale 'A'
3.5	Vibration Level	Minimum
4)	<b>POWER SUPPLY</b>	230 V AC 1-φ 50HZ

### Optional Accessories

- Vinyl Curtain / Polycarbonate enclosures on all sides
- SS Perforated Safety Grill for HEPA Filter
- 5/15 Amp single – phase switch socket
- Audio Visual Alarm indicating condition of HEPA Filters

## LAMINAR AIR FLOW UNIT (STAND MOUNTED)



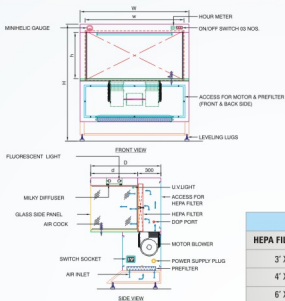
HEPA FILTER SIZE	INTERNAL DIMENSIONS			EXTERNAL DIMENSIONS		
	w	d	h	W	D	H
4' X 2'	1275	685	610	1355	765	1440
4' X 4'	1275	1295	610	1355	1375	1440
6' X 4'	1900	1295	610	1980	1375	1440

Sr. No.	Item	Description
1)	<b>MOC</b>	SS 304 / SS 316 / Customised
2)	<b>HEART OF SYSTEM COMPRISES OF</b>	
2.1		Imported Minipleat HEPA Filter with hot melt technology, which conforms to EU-13 / EU-14 Grade
2.2		Fabtech make Fresh Air prefilter which conforms to EU 6 Grade, with efficiency of 95% down to 5µ .
2.3		Motor Blower provided are statically and dynamically balanced, Sufficient capacity and static pressure is maintained to take care of airflow requirement for entire life to HEPA.
2.4		Glass / Poly carbonate side Panels
2.5		Dwyer Make Magnetic Differential Pressure Gauge across supply HEPA Filter
2.6		Fluorescent Light ( 250 Lux)
2.7		ON/OFF Switches for motor & Lights.
3)	<b>PERFORMANCE</b>	
3.1	Air cleanliness	ISO Class 5 (ISO 14644-1:1999 (E))
3.2	Air Velocities	0.45 ± 0.05 mps
3.3	Air Flow	Vertical
3.4	Noise Level	Less than 67 dB on Scale 'A' when ambient is not greater than 55dB on Scale 'A'
3.5	Vibration Level	Minimum
4)	<b>POWER SUPPLY</b>	230 V AC 1-Ø 50HZ

### Optional Accessories

- Vinyl Curtain
- Polycarbonate enclosures with Front Door ( Hinged / Pneumatic Cylinder )
- SS Perforated Safety Grill for HEPA Filter
- 5/15 Amp single - phase switch socket
- Audio Visual Alarm indicating condition of HEPA Filters
- U.V. Light with Hour meter
- Air / Gas Cock

# HORIZONTAL LAMINAR AIR FLOW UNIT



HEPA FILTER SIZE	INTERNAL DIMENSIONS			EXTERNAL DIMENSIONS		
	w	d	h	W	D	H
3' X 2'	875	610	570	1035	765	1440
4' X 2'	1180	610	570	1340	1375	1440
6' X 2'	1800	610	570	1960	1375	1440

Sr. No.	Item	Description
1)	<b>MOC</b>	SS 304 / SS 316 / Customised
2)	<b>HEART OF SYSTEM COMPRISES OF</b>	
2.1		Imported Minipleat HEPA Filter with hot melt technology, which conforms to EU-13 / EU-14 Grade
2.2		Fabtech make Fresh Air prefilter which conforms to EU 6 Grade, with efficiency of 95% down to 5µ .
2.3		Motor Blower provided are statically and dynamically balanced, Sufficient capacity and static pressure is maintained to take care of airflow requirement for entire life to HEPA.
2.4		Dvyer Make Minihelic Differential Pressure Gauge
2.5		Working Table : S.S. 304 with Due Reinforcement
2.6		Glass side panel
2.7		Fluorescent Light ( 250 Lux)
2.8		ON/OFF Switches for motor & Lights.
2.9		5/15 Amp single – phase switch socket for external equipment
2.10		DOP Test Port at upstream of HEPA filter
3)	<b>PERFORMANCE</b>	
3.1	Air cleanliness	ISO Class 5 (ISO 14644-1:1999 (E)
3.2	Air Velocities	0.45 ± 0.05 mps
3.3	Air Flow	Horizontal
3.4	Noise Level	Less than 67 dB on Scale 'A' when Ambient is not greater than 55dB on Scale 'A'
3.5	Vibration Level	Minimum
4)	<b>POWER SUPPLY</b>	230 V AC 1-Ø 50HZ

## Optional Accessories

- Front doors (hinged/Pneumatic Cylinder)
- SS Perforated Safety Grill for HEPA Filter
- Air / Gas Cock
- Audio Visual Alarm indicating condition of HEPA Filters
- U.V. Light with Hour meter
- Flame Proof Fitting